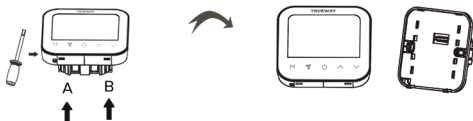


THERMOSTAT INSTALLATION GUIDE

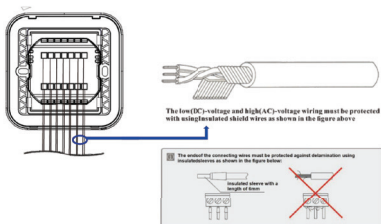
(TX1007 SERIES)

INSTALLATION AND COMMISSIONING

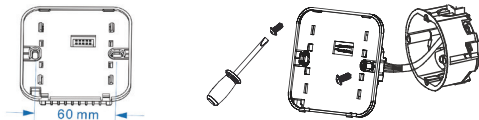
1. Remove the front casing by prying buckles with flat screwdriver at the bottom of the panel, for convenience of installation, slightly prying from A buckle first then go for B buckle.



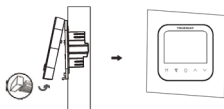
2. Wiring on the terminals of the wiring box according to above wiring diagram. For the convenience of wiring, first step is to wire the volt-free wires, low-voltage wires and then high-voltage wires. The low(DC)-voltage and high(AC)-voltage wiring must be protected with using insulated shield wires, or it might be posed a risk to damage the thermostat. The ends of the connecting wires must be protected against delamination using insulated sleeves as shown in the figure below :



3. Fix the back plate and flush-mounted in a 60mm wall box, make sure the back casing is in the appropriate position as shown in the figure below.

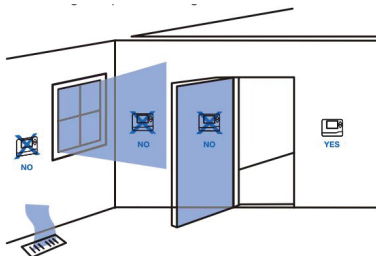


4. Fit the front panel and back plate to the top edge and make sure the pins are properly positioned. Slightly press the front panel until you hear positive click.



INSTALLATION TIPS

The thermostat should be installed approximately 4 to 5 feet above the floor. Select an area with average temperature and good air circulation



Do not install thermostat in locations :

- Close to hot or cold air ducts
- That are in direct sunlight
- with an outside wall behind the thermostat
- In areas that do not require conditioning
- Where there are dead spots or drafts (in corners or behind doors)
- Where there might be concealed chimneys or pipes.

TIP

Pick an installation location that easy for the user to access. The temperature of the location should be representative of the building.

TROUBLE SHOOTING TIPS

IF...	THEN...
Heating system does not turn on	Set the mode to Heat by pressing the Mode button. Wait five minutes for the heating system to respond.
Cooling system does not turn on	Set the mode to Cool by pressing the Mode button. Wait five minutes for the cooling system to respond.
The fan doesn't work	Check whether the fan mode is set to Auto Check whether the heating or cooling system works well or not
The Mode button does not work	Check whether the system is working in energy saving mode. Check whether the heating or cooling system works well. Check whether the keypad is locked out (ISU mode item 4)
The Fan button doesn't work	Check whether the system is working in energy saving mode. Check whether the thermostat is off. Check whether the key pad is locked out (ISU mode item 4)
The Up or Down button does not work	Check whether the system is working in energy saving mode. Check whether the thermostat is off. Check whether the key pad is locked out (ISU mode item 4)