

THERMOSTAT INSTALLATION GUIDE

(TX1000 SERIES)

INSTALLATION AND COMMISSIONING



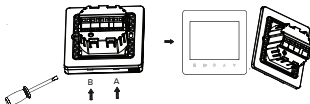
Must be installed by a trained and experienced technician.
Read this user guide carefully.

- ◆ Wiring errors can potentially damage the product or cause a hazardous condition. Warranty does NOT cover this damage.
- ◆ Check the ratings in this user guide to verify that this product is suitable for your application.
- ◆ Always test for proper operation after installation.



CAUTION: ELECTRICAL HAZARD CAN CAUSE ELECTRICAL SHOCK OR EQUIPMENT DAMAGE. DISCONNECT POWER BEFORE INSTALLATION.

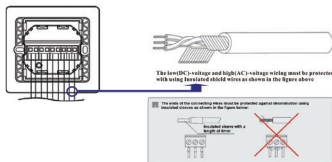
1. Remove the front casing by prying buckles with flat screwdriver at the bottom of the panel and slightly prying from A buckle first then go for B buckle.



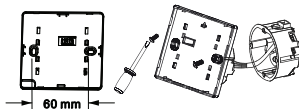
2. Wiring on the terminals of the wiring box according to above wiring diagram, For the convenience of wiring, first step is to wire the volt-free wires, low-voltage wires and then high-voltage wires.

Take care when wiring Modbus communications or Analog outputs or universal inputs or Analog inputs terminals, these low-voltage terminals must be protected with using insulated shield wires, as well as the ends of connecting wires must be protected against delimitation using insulated sleeves as shown in the figure below.

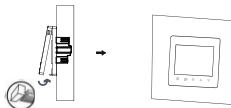
Or it can potentially damaging the product. Warranty does NOT cover this damage.



3. Fix the back plate and flush-mounted in a 60mm wall box, make sure the back casing is in the appropriate position as shown in the figure below.

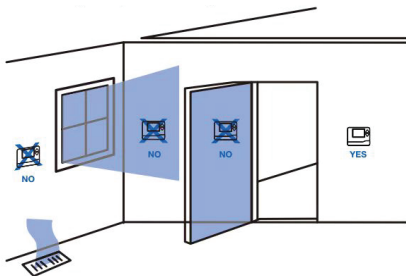


4. Fit the front panel and back plate to the top edge and make sure the pins are properly positioned. Slightly press the front panel until you hear positive click.



INSTALLATION TIPS

The thermostat should be installed approximately 4 to 5 feet above the floor. Select an area with average temperature and good air circulation



Do not install thermostat in locations :

- Close to hot or cold air ducts
- That are in direct sunlight
- with an outside wall behind the thermostat
- In areas that do not require conditioning
- Where there are dead spots or drafts (in corners or behind doors)
- Where there might be concealed chimneys or pipes.

TIP

Pick an installation location that easy for the user to access. The temperature of the location should be representative of the building.

TROUBLE SHOOTING TIPS

IF...	THEN...
Heating system does not turn on	Set the mode to Heat by pressing the Mode button. Wait five minutes for the heating system to respond.
Cooling system does not turn on	Set the mode to Cool by pressing the Mode button. Wait five minutes for the cooling system to respond.
The fan doesn't work (not available in VAV series)	Check whether the fan mode is set to Auto Check whether the heating or cooling system works well or not
The Mode button does not work	Check whether the thermostat is off. Check whether the heating or cooling system works well. Check whether the keypad is locked out (ISU mode item 4)
The Fan button doesn't work (not available in VAV series)	Check whether the system is working in energy saving mode. Check whether the thermostat is off. Check whether the key pad is locked out (ISU mode item 4)
The Up or Down button does not work	Check whether the system is working in energy saving mode. Check whether the thermostat is off. Check whether the key pad is locked out (ISU mode item 4)